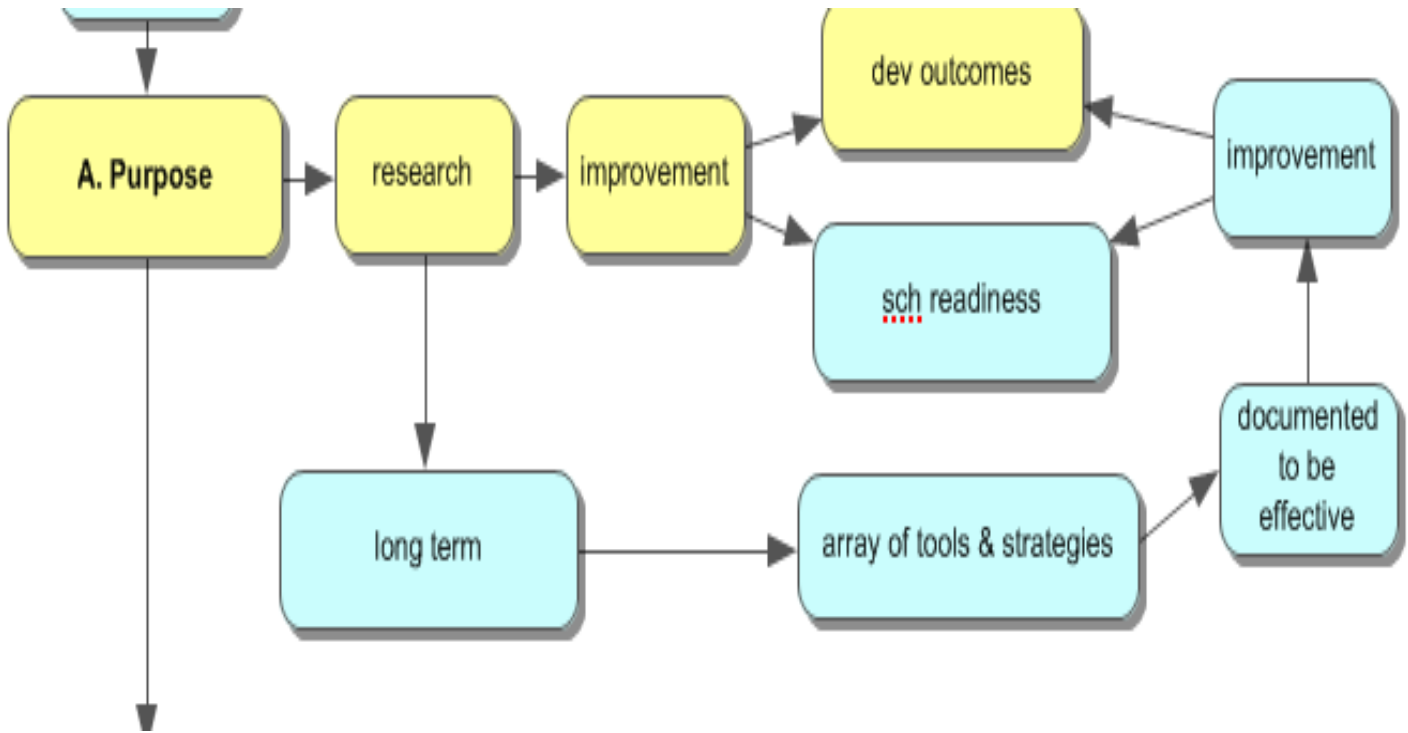
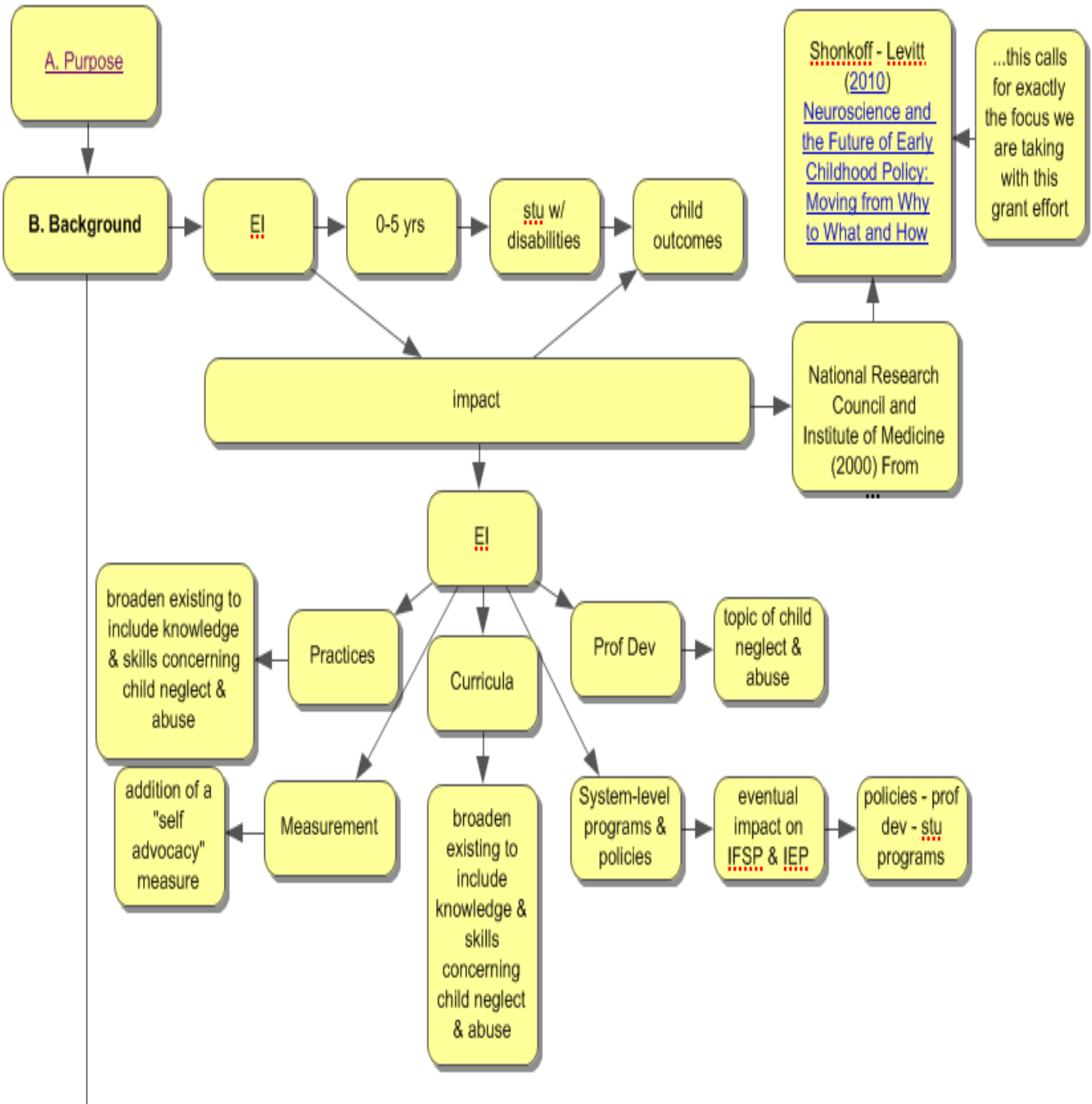
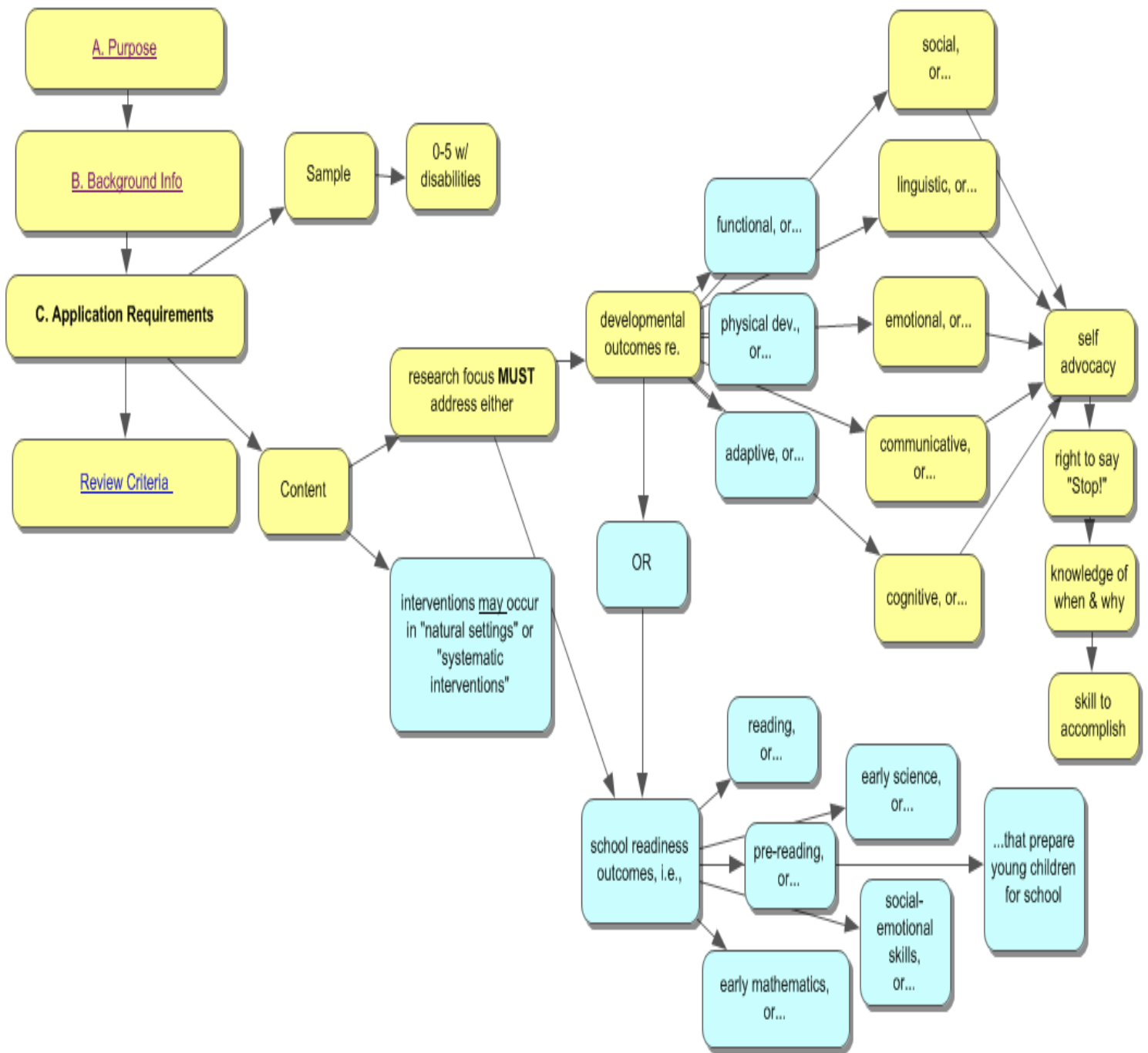


1. Reanalysis of the IES EI RFP (“HJ – notes – IES – EI – RFP”)
2. Resulting information:
 - a. Info in “blue” = grant option NOT focused upon
 - b. Info in “yellow” = grant option focused upon







A. Purpose

B. Background Info

Sample

0-5 w/
disabilities

C. Application Requirements

Review Criteria

Content

research focus **MUST**
address either

developmental
outcomes re.

OR

interventions may occur
in "natural settings" or
"systematic
interventions"

school readiness
outcomes, i.e.,

reading,
or...

early science,
or...

pre-reading,
or...

social-
emotional
skills,
or...

early mathematics,
or...

...that prepare
young children
for school

social,
or...

linguistic, or...

functional, or...

physical dev.,
or...

emotional, or...

adaptive, or...

communicative,
or...

cognitive, or...

self
advocacy

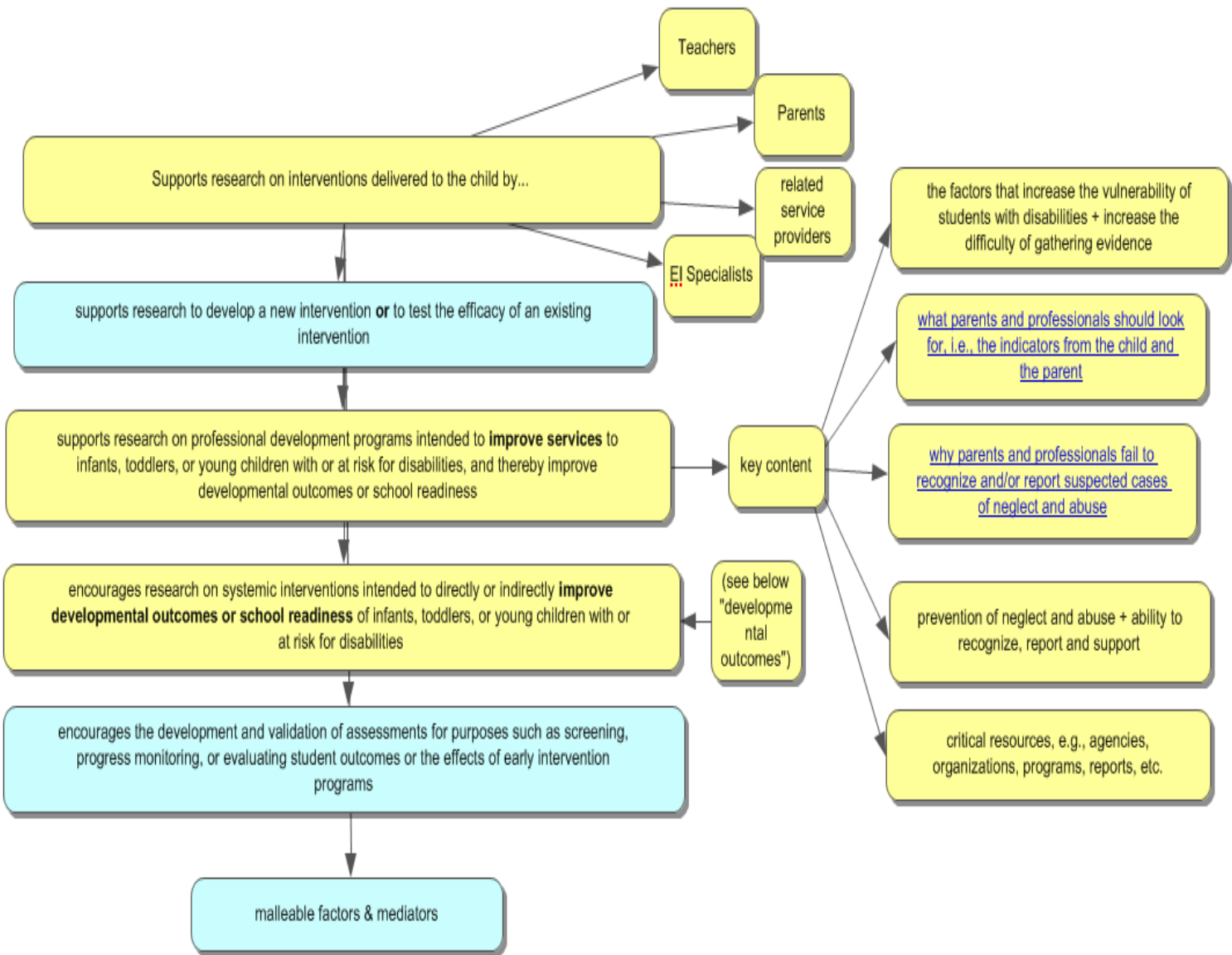
right to say
"Stop!"

knowledge of
when & why

skill to
accomplish

C. Application Requirements

...cont.



C. Application Requirements

..cont

Continuation of the “key content” information:

Web site: [Strengthening Families and Communities: 2011 Resource](#) = Five Protective Factors

Web copy of “[WI GBYS](#)” Power Point Presentation

